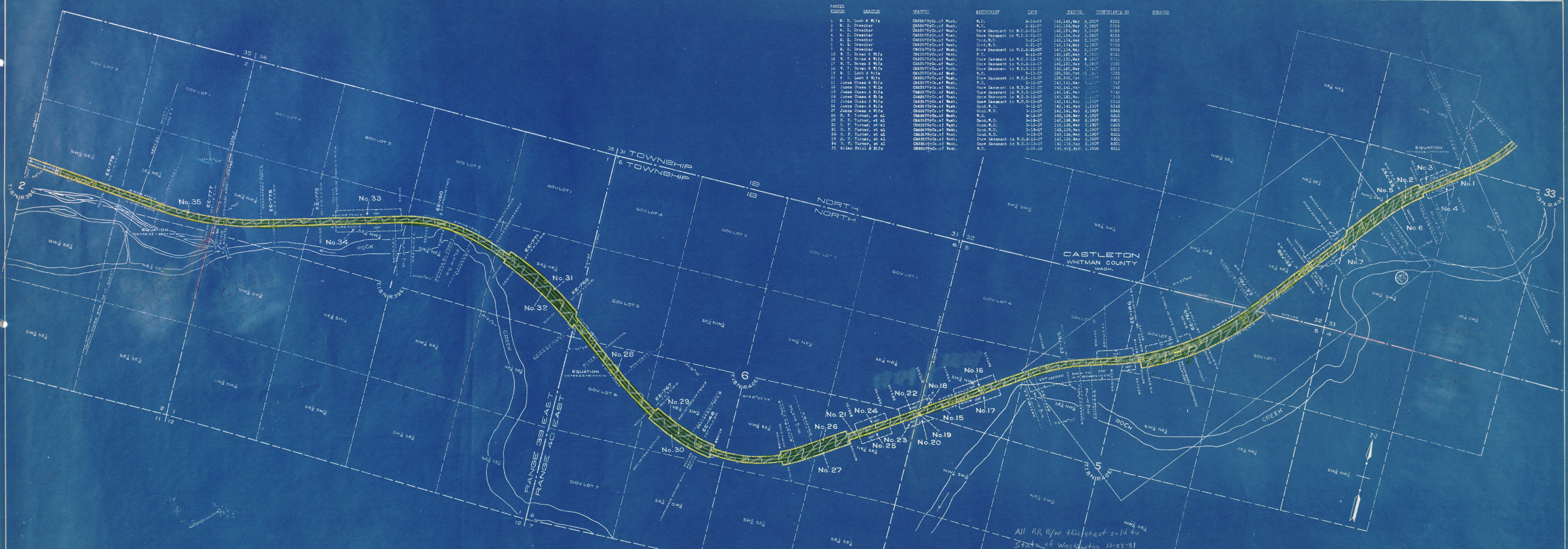


PARCEL NUMBER	GRANTOR	GRANTEE	ASSURMENT	DATE	RECORD	ORIGINAL'S NO.	REMARKS
1	W. E. Lueb & Wife	CHAS. PRYCO. OF WASH.	W.D.	2-14-07	142,146, May	2,1907	8551
2	W. E. Dreescher	CHAS. PRYCO. OF WASH.	W.D.	2-21-07	142,184, May	2,1907	8553
3	W. E. Dreescher	CHAS. PRYCO. OF WASH.	Snow Easement in W.D.	2-21-07	142,184, May	2,1907	8553
4	W. E. Dreescher	CHAS. PRYCO. OF WASH.	Snow Easement in W.D.	2-21-07	142,184, May	2,1907	8553
5	W. E. Dreescher	CHAS. PRYCO. OF WASH.	Snow Easement in W.D.	2-21-07	142,184, May	2,1907	8553
6	W. E. Dreescher	CHAS. PRYCO. OF WASH.	Snow Easement in W.D.	2-21-07	142,184, May	2,1907	8553
7	W. E. Dreescher	CHAS. PRYCO. OF WASH.	Snow Easement in W.D.	2-21-07	142,184, May	2,1907	8553
8	W. E. Dreescher	CHAS. PRYCO. OF WASH.	Snow Easement in W.D.	2-21-07	142,184, May	2,1907	8553
9	W. E. Dreescher	CHAS. PRYCO. OF WASH.	Snow Easement in W.D.	2-21-07	142,184, May	2,1907	8553
10	W. T. Bowen & Wife	CHAS. PRYCO. OF WASH.	Snow Easement in W.D.	3-12-07	142,180, May	2,1907	8532
11	W. T. Bowen & Wife	CHAS. PRYCO. OF WASH.	Snow Easement in W.D.	3-12-07	142,180, May	2,1907	8532
12	W. T. Bowen & Wife	CHAS. PRYCO. OF WASH.	Snow Easement in W.D.	3-12-07	142,180, May	2,1907	8532
13	W. T. Bowen & Wife	CHAS. PRYCO. OF WASH.	Snow Easement in W.D.	3-12-07	142,180, May	2,1907	8532
14	W. T. Bowen & Wife	CHAS. PRYCO. OF WASH.	Snow Easement in W.D.	3-12-07	142,180, May	2,1907	8532
15	W. E. Lueb & Wife	CHAS. PRYCO. OF WASH.	Snow Easement in W.D.	9-13-07	139,330, Oct	22,1907	5333
16	W. E. Lueb & Wife	CHAS. PRYCO. OF WASH.	Snow Easement in W.D.	9-13-07	139,330, Oct	22,1907	5333
17	W. E. Lueb & Wife	CHAS. PRYCO. OF WASH.	Snow Easement in W.D.	9-13-07	139,330, Oct	22,1907	5333
18	W. E. Lueb & Wife	CHAS. PRYCO. OF WASH.	Snow Easement in W.D.	9-13-07	139,330, Oct	22,1907	5333
19	W. E. Lueb & Wife	CHAS. PRYCO. OF WASH.	Snow Easement in W.D.	9-13-07	139,330, Oct	22,1907	5333
20	W. E. Lueb & Wife	CHAS. PRYCO. OF WASH.	Snow Easement in W.D.	9-13-07	139,330, Oct	22,1907	5333
21	James Chase & Wife	CHAS. PRYCO. OF WASH.	Snow Easement in W.D.	2-10-07	142,141, May	2,1907	8543
22	James Chase & Wife	CHAS. PRYCO. OF WASH.	Snow Easement in W.D.	2-10-07	142,141, May	2,1907	8543
23	James Chase & Wife	CHAS. PRYCO. OF WASH.	Snow Easement in W.D.	2-10-07	142,141, May	2,1907	8543
24	James Chase & Wife	CHAS. PRYCO. OF WASH.	Snow Easement in W.D.	2-10-07	142,141, May	2,1907	8543
25	James Chase & Wife	CHAS. PRYCO. OF WASH.	Snow Easement in W.D.	2-10-07	142,141, May	2,1907	8543
26	James Chase & Wife	CHAS. PRYCO. OF WASH.	Snow Easement in W.D.	2-10-07	142,141, May	2,1907	8543
27	James Chase & Wife	CHAS. PRYCO. OF WASH.	Snow Easement in W.D.	2-10-07	142,141, May	2,1907	8543
28	H. F. Turner, et al	CHAS. PRYCO. OF WASH.	W.D.	2-12-07	142,128, May	2,1907	8501
29	H. F. Turner, et al	CHAS. PRYCO. OF WASH.	W.D.	2-12-07	142,128, May	2,1907	8501
30	H. F. Turner, et al	CHAS. PRYCO. OF WASH.	W.D.	2-12-07	142,128, May	2,1907	8501
31	H. F. Turner, et al	CHAS. PRYCO. OF WASH.	W.D.	2-12-07	142,128, May	2,1907	8501
32	H. F. Turner, et al	CHAS. PRYCO. OF WASH.	W.D.	2-12-07	142,128, May	2,1907	8501
33	H. F. Turner, et al	CHAS. PRYCO. OF WASH.	W.D.	2-12-07	142,128, May	2,1907	8501
34	H. F. Turner, et al	CHAS. PRYCO. OF WASH.	W.D.	2-12-07	142,128, May	2,1907	8501
35	W. E. Lueb & Wife	CHAS. PRYCO. OF WASH.	W.D.	2-26-08	142,469, Apr	1,1908	8211



All RR R/W this sheet sold to
State of Washington 12-23-81

Sheet No. 2 of 52 sheets of C. M. & St. P. Ry. Co. Main Line
from survey station 722+27 to survey station 983+36.1
A. E. Lodge
Valuation Engineer

RIGHT OF WAY AND TRACK MAP
CHICAGO, MILWAUKEE & ST. PAUL RY. CO.
OPERATED BY THE
CHICAGO, MILWAUKEE & ST. PAUL RY. CO.
COLUMBIA DIVISION MAIN LINE
STATION 722+27 TO STATION 983+36.1
SCALE: 1 IN. = 400 FT. JUNE 30, 1918.
OFFICE OF VALUATION ENGINEER
CHICAGO, ILLINOIS.

